

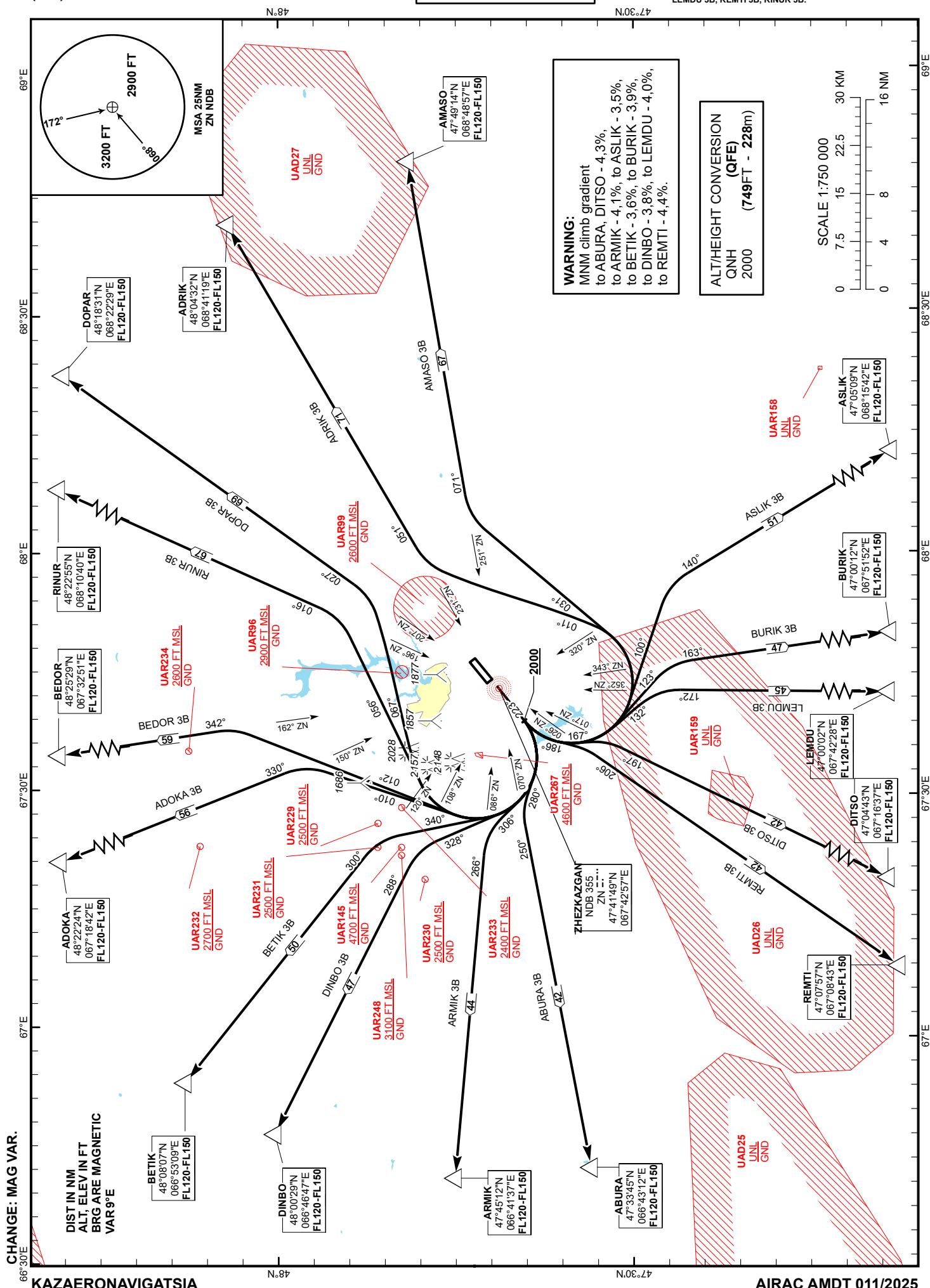
STANDARD DEPARTURE  
CHART - INSTRUMENT  
(SID) - ICAO

TRANSITION ALTITUDE  
10000 FT

ZHEKZKAZGAN TOWER 127.1  
ZHEKZKAZGAN ATIS (EN) 131.4  
ZHEKZKAZGAN ATIS (RU) 122.4

ABURA 3B, ADOKA 3B, ADRIK 3B,  
AMASO 3B, ARMIK 3B, ASLIK 3B,  
BEDOR 3B, BETIK 3B, BURIK 3B,  
DINBO 3B, DITSO 3B, DOPAR 3B,  
LEMDU 3B, REMTI 3B, RINUR 3B.

ZHEKZKAZGAN  
RWY 22



**STANDARD DEPARTURE ROUTES – INSTRUMENT (SID) ZHEZKAZGAN RWY 22**

**RINUR 3B**

After take-off climb straight ahead to 2000 or above.  
Turn RIGHT on track 056° until intercept bearing 196°ZN, then proceed on track 016° to RINUR (N482255 E0681040).  
Cross RINUR at FL120 - FL150.

**REMTI 3B**

After take-off climb straight ahead to 2000 or above.  
Turn LEFT on track 186° until intercept bearing 026°ZN, then proceed on track 206° to REMTI (N470757 E0670843).  
Cross REMTI at FL120 - FL150.

**DOPAR 3B**

After take-off climb straight ahead to 2000 or above.  
Turn RIGHT on track 067° until intercept bearing 207°ZN, then proceed on track 027° to DOPAR (N481831 E0682229).  
Cross DOPAR at FL120 - FL150.

**ABURA 3B**

After take-off climb straight ahead to 2000 or above.  
Turn RIGHT on track 280° until intercept bearing 070°ZN, then proceed on track 250° to ABURA (N473345 E0664312).  
Cross ABURA at FL120 - FL150.

**ADRIK 3B**

After take-off climb straight ahead to 2000 or above.  
Turn LEFT on track 011° until intercept bearing 231°ZN, then proceed on track 051° to ADRIK (N480432 E0684119).  
Cross ADRIK at FL120 - FL150.

**ARMIK 3B**

After take-off climb straight ahead to 2000 or above.  
Turn RIGHT on track 306° until intercept bearing 086°ZN, then proceed on track 266° to ARMIK (N474512 E0664137).  
Cross ARMIK at FL120 - FL150.

**AMASO 3B**

After take-off climb straight ahead to 2000 or above.  
Turn LEFT on track 031° until intercept bearing 251°ZN, then proceed on track 071° to AMASO (N474914 E0684857).  
Cross AMASO at FL120 - FL150.

**DINBO 3B**

After take-off climb straight ahead to 2000 or above.  
Turn RIGHT on track 328° until intercept bearing 108°ZN, then proceed on track 288° to DINBO (N480029 E0664647).  
Cross DINBO at FL120 - FL150.

**ASLIK 3B**

After take-off climb straight ahead to 2000 or above.  
Turn LEFT on track 100° until intercept bearing 320°ZN, then proceed on track 140° to ASLIK (N470509 E0681542).  
Cross ASLIK at FL120 - FL150.

**BETIK 3B**

After take-off climb straight ahead to 2000 or above.  
Turn RIGHT on track 340° until intercept bearing 120°ZN, then proceed on track 300° to BETIK (N480807 E0665309).  
Cross BETIK at FL120 - FL150.

**BURIK 3B**

After take-off climb straight ahead to 2000 or above.  
Turn LEFT on track 123° until intercept bearing 343°ZN, then proceed on track 163° to BURIK (N470012 E0675152).  
Cross BURIK at FL120 - FL150.

**ADOKA 3B**

After take-off climb straight ahead to 2000 or above.  
Turn RIGHT on track 010° until intercept bearing 150°ZN, then proceed on track 330° to ADOKA (N482224 E0671842).  
Cross ADOKA at FL120 - FL150.

**LEMDU 3B**

After take-off climb straight ahead to 2000 or above.  
Turn LEFT on track 132° until intercept bearing 352°ZN, then proceed on track 172° to LEMDU (N470002 E0674228).  
Cross LEMDU at FL120 - FL150.

**BEDOR 3B**

After take-off climb straight ahead to 2000 or above.  
Turn RIGHT on track 012° until intercept bearing 162°ZN, then proceed on track 342° to BEDOR (N482529 E0673251).  
Cross BEDOR at FL120 - FL150.

**DITSO 3B**

After take-off climb straight ahead to 2000 or above.  
Turn LEFT on track 167° until intercept bearing 017°ZN, then proceed on track 197° to DITSO (N470443 E0671637).  
Cross DITSO at FL120 - FL150.